

# INDIAN NOTICES TO MARINERS



EDITION NO. 07 DATED 01 APR 2024

(CONTAINS NOTICES 058 TO 062)

REACH US 24 x 7



[msis-inho@navy.gov.in](mailto:msis-inho@navy.gov.in)  
[inho@navy.gov.in](mailto:inho@navy.gov.in)



+91-135-2748373



National Hydrographic Office  
107-A, Rajpur Road  
Dehradun – 248001  
INDIA



Commander (H)  
Maritime Safety Information Services  
+91- 135 - 2746290-117

WWW

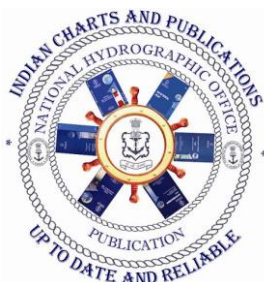
[www.hydrobharat.gov.in](http://www.hydrobharat.gov.in)

## CONTENTS

<u>Section No.</u>	<u>Title</u>
I	List of Charts Affected
II	Permanent Notices
III	Temporary and Preliminary Notices
IV	Marine Information
V	NAVAREA VIII Warnings in force
VI	Corrections to Sailing Directions
VII	Corrections to List of Lights
VIII	Corrections to List of Radio Signals
IX	Corrections to Miscellaneous Nautical Publications
X	Reporting of Navigational Dangers

(PUBLISHED ON NHO WEBSITE ON 1<sup>ST</sup> & 16<sup>TH</sup> OF EVERY MONTH)

**FEEDBACK:** [msis-inho@navy.gov.in](mailto:msis-inho@navy.gov.in)



INSIST ON INDIAN CHARTS AND  
PUBLICATIONS  
Original, Authentic and Up-to-Date



© Govt. of India Copyright

No permission is required to make copies of these Notices. However, such copies are not to be commercially sold.

## II

### MARINER'S OBLIGATION AND A CHART MAKER'S PLEA

Observing changes at sea proactively and reporting them promptly to the concerned charting agency, is an obligation that all mariners owe to the entire maritime community towards SOLAS. Mariners are requested to notify the Chief Hydrographer to the Government of India at the above mentioned address/fax number/ E mail address immediately on discovering new or suspected dangers to navigation, changes/ defects pertaining to navigational aids, and shortcomings in Indian charts/ publications. The Hydrographic Note [Form IH – 102] is a convenient form to notify such changes. Specimen form is attached at Section IX with this notice. Also visit our website for downloading and filling up instructions for Hydrographic Note.

Chief Hydrographer  
to the Government of India

### WARNING AGAINST USE OF COUNTERFEIT PRODUCTS

**All mariners are cautioned against the use of counterfeit copies of IN Charts and publications. Navigational Charts produced after 31 Oct 14 carry NHO crest as watermark on the reverse with backslip. Chart Agent's stamp is mandatory on all Charts.**

**Counterfeit products may have errors resulting in potential risks. The same are not approved by inspecting agencies and do not satisfy the carriage requirements of SOLAS chapter V.**

**Mariners are strongly advised not to use or encourage the use of counterfeit charts and publications. Failure to comply with the warning may invite legal action.**

### III

## **EXPLANATORY NOTES**

**Corrections to Charts and Publications.** Section I comprises List of Charts affected by the notices contained in this edition. Whereas sections II and III contain information for correcting the charts and publications. Mariners should insist on corrected charts from their chart distributors/agents.

- (a) Geographical positions given are in the horizontal datum of the current edition of the chart, unless otherwise stated.
- (b) Bearings are true, reckoned clockwise from 000° to 359°. Bearings to lights are from seaward.
- (c) Symbols referred to, are those shown on the chart 5020 (INT 1).
- (d) Alterations to depth contours, deletion of depths to make way for new detail, etc; are not normally mentioned, unless they have some navigational significance.
- (e) Blocks and notes, if any, accompanying the Notices in Sections II and III are placed after Section IX.

**Temporary and Preliminary Notices.** These are indicated by (T) and (P) respectively after the Notice number and are placed in Section III. Sl Nos. of those in force are published quarterly on 01 Jan, 01 Apr, 01 Jul and 01 Oct, and their text is published in Annual Edition of Indian Notices to Mariners. They should be inserted in pencil, by the user, on receipt.

**Source of Information.** A star preceding the number of a Notice indicates that the notice is promulgated by INHO based on original information received.

**Sailing Directions.** Corrections for the Sailing Directions (Pilots) are given in Section VI.

**Lights.** Corrections to Indian List of Lights are given in Section VII, where affected Light List number is quoted.

- (a) These corrections should be incorporated as per instructions given on page XI of the List of Lights.
- (b) Such correction notices to list of lights may be published in either an earlier or a later Edition of N to M than the Edition containing the Notice to the chart correction.
- (c) The range of a light given is its nominal range. Its geographical range is given in parenthesis only if it is less than the nominal range.
- (d) A star indicates that the corresponding field is to be amended and all stars indicate that new light is to be inserted.

**Radio Signals.** The corrections in Section VIII should be cut and pasted in the appropriate volume of the List of Radio Signals.

**Radio Navigational Warnings.**

- (a) These are broadcast as serially numbered NAVAREA warnings by the concerned NAVAREA coordinator through GMDSS and Area Radio Broadcasts.
- (b) They contain important information affecting navigational safety, which cannot await the publication of the next edition of N to M.
- (c) It should be borne in mind that they may be based on reports which cannot always be verified before promulgation.
- (d) It is therefore necessary to be selective, and promulgate only the more important warnings to avoid over loading users; the less important information is included in the forthcoming edition of N to M or the Chart/Publication concerned.

## IV

**Laws and Regulations.** While in the interest of the safety of shipping, the Hydrographic Office makes every endeavor to include in its publications details of the laws and regulations of all countries pertaining to navigation, it must be clearly understood: -

- (a) That no liability whatsoever can be accepted for failure to publish details of any particular law or regulation and
- (b) That publication of details of a law or regulation is solely for the safety and convenience of shipping and implies no recognition of the International validity of the law or regulation.

**Correction of Charts and Publications by the Users.** Notices to Mariners contain important information concerning safety of navigation at sea, hence, they should be used to keep the specified charts and publications up-to-date.

**Reliance on Charts and Associated Publications.** While every effort is made by the Hydrographic Office to ensure the accuracy of the information on Charts and Publications before they are published, it should be appreciated that it may not always be complete and up-to-date. The mariner must be the final judge for the reliance he can place on the information available, bearing in mind his particular circumstances, local pilotage guidance and judicious use of available navigational aids.

**Use of Global Positioning System (WGS 84) positions.**

- (a) The positions of hydrographic objects shown on some of the Indian charts and publications are in Everest datum. However, the positions of vessels obtained from Global Positioning System (GPS) are on World Geodetic System 1984 datum. There will always exist difference in the position values obtained by visual fixing (Everest Datum) and GPS position (WGS 84 datum).
- (b) Wherever these differences have been ascertained, their average values are published as a Cautionary Note on the chart concerned, as shifts in Latitude and Longitude. Whilst plotting GPS positions on charts, the shift values as given on the chart must be applied, before making any assessment of the navigational situation vis-à-vis the other charted information.
- (c) These datum shift values are not uniform, particularly in areas off Andaman and Nicobar and Lakshadweep Islands, as these places are not linked to mainland network (Everest datum). Mariners are advised to use alternate source of position information such as Visual or Radar, particularly when closing the shore or navigating in the vicinity of dangers.

**Source Data on Charts.** All Indian charts contain specific information on their source of hydrographic data. In areas where the source data is very old, incomplete and less reliable, the mariner must use such charts with prudence. Mariner should always use the largest scale charts available for the area. Apart from being the most detailed, the larger scale charts are usually corrected first. Hydrographic information may be sparse on small scale charts. On such charts, a charted shoal may be in error as regards position, least depth and extent. Uncharted dangers may also exist, particularly in areas away from well-established routes. Mariners must exercise due caution.

**Further Guidance.** The Mariner's Hand Book (NP 100) gives full explanation on the use of charts and the type of information contained on charts. In their own interest, all users of charts should refer to it.

## NEWLY PUBLISHED INDIAN CHARTS, ENC<sub>s</sub> AND PUBLICATION

1. The new Indian Charts that are available for mariners in the market are as follows:-

<i>Chart No.</i>	<i>Date of Publication</i>	<i>Title, Limits &amp; Description</i>	<i>Scale</i>	<i>Folio</i>	<i>Price</i>
<i>Nil</i>					

2. The new edition Indian Charts that are available for mariners in the market are as follows:-

<i>Chart No.</i>	<i>Date of Publication</i>	<i>Title, Limits &amp; Description</i>	<i>Scale</i>	<i>Folio</i>	<i>Price</i>
<i>Nil</i>					

3. The Indian Charts that are permanently withdrawn are as follows:-

<i>Chart No.</i>	<i>Date of Publication</i>	<i>Title</i>	<i>On Publication of New Chart/ Edition</i>	<i>Date of Publication</i>
<i>Nil</i>				

4. The new Indian Electronic Navigational Charts that are available for mariners in the market are as follows:-

<i>ENC Cell Name</i>	<i>Chart No.</i>	<i>Title</i>	<i>Issue Date</i>
<i>Nil</i>			

5. The new edition Indian Electronic Navigational Charts that is available for mariners in the market is as follows:-

<i>ENC Cell Name</i>	<i>Chart No.</i>	<i>Title</i>	<i>Issue Date</i>
IN44253A	4253	APPROACHES TO PORT BLAIR	22-03-2024

6. The Indian Electronic Navigational Charts that is permanently withdrawn is as follows:-

<i>ENC Cell Name</i>	<i>Chart No.</i>	<i>Title</i>	<i>Issue Date</i>
IN44253A	4253	APPROACHES TO PORT BLAIR	23-04-2021

7. The forthcoming Indian Charts are as follows:-

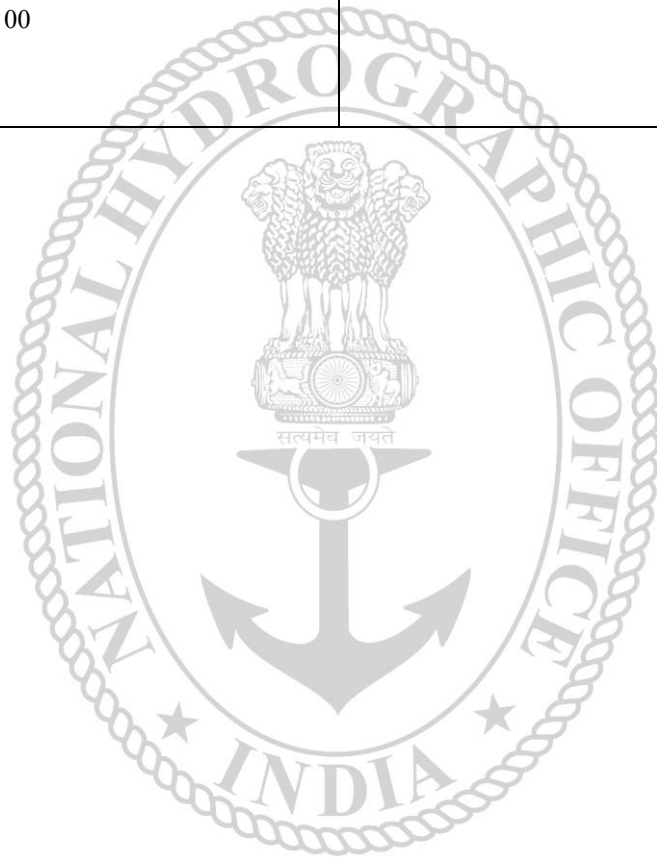
<i>Chart No</i>	<i>Title</i>	<i>Scale</i>	<i>Remarks</i>
2052	CHHARA PORT	25000	NEW CHART
2083 (INT 7339)	APPROACHES TO SIKKA	37500	NEW CHART
262 (INT 7365)	CAPE COMORIN TO PAMBA	300000	NEW EDITION
291	GWADAR TO DWARKA	750000	NEW EDITION
404 (INT 7439)	ELPHINSTONE HARBOUR TO PORT BLAIR	150000	NEW EDITION

## VI

### Availability of ENC's

The complete folios of Official Indian ENC's are distributed worldwide through JEPPESEN MARINE (formerly C-MAP), UKHO and Norwegian Hydrographic Service. UKHO distributes Indian ENC's through the worldwide network of their agents and distributors. Updates are also made available as per the existing policy of the distributor. Mariners and other ENC users may contact the under mentioned for further details:

<b>United Kingdom Hydrographic Office</b> Admiralty Way, Taunton, Somerset TA1 2DN, UK Tel : +44 (0) 1823 337900 Fax : +44 (0) 1823 330561, 1823 284077 Web site : <a href="http://www.hydro.gov.uk">www.hydro.gov.uk</a>	<b>M/s IIC Technologies Limited</b> B-2-350/5/B-22, Road No. 3 Banjara Hills, Hyderabad - 500 034 Telangana Tel: +91 4039144444 Fax: +91 4039144455 Email: <a href="mailto:somnath.marthi@iictechnologies.com">somnath.marthi@iictechnologies.com</a> Web: <a href="http://www.iictechnologies.com">www.iictechnologies.com</a>
<b>M/s Primar</b> Norwegian Hydrographic Service, Postbox 60, 4001 Stavanger Norway Telephone - +47 - 51 85 87 00 Fax - + 47 - 51 85 87 08 E-mail: <a href="mailto:data@ecc.no">data@ecc.no</a> Website: - <a href="http://www.primar.org">www.primar.org</a>	



## VII

### TEMPORARY AND PRELIMINARY NOTICES

*In Force as on 01 Apr 2024*

*(Former List dated 01 Jan 2024 is cancelled)*

<b>Cancelled Notices</b>	
<b>Area</b>	<b>Notice No.</b>
1	NIL
2	036/23, 051/23, 189/23, 036/24, 038/24, 042/24, 046/24, 052/24, 056/24
3	171/23, 180/23, 186/23, 191/23, 033/24, 043/24, 047/24, 053/24
4	179/21

<b>1. AFRICA EAST COAST, MADAGASCAR, RED SEA, ARABIA, PERSIAN GULF, PAKISTAN.</b>		
<b>Notice</b>	<b>Charts Affected</b>	<b>Description</b>
091/19	227 – 2061 – 2099.	INDIAN OCEAN – MALDIVES – Male Atoll – Construction Work.
149/22	22 (INT 752) – 273 – 7071 (INT 71) – 7072 (INT 72) – 7073 (INT 73) – 7703 (INT 703) – 7706 (INT 706) – 7707 (INT 707).	ARABIAN AND LAKSHADWEEP SEAS – INDIA AND MALDIVES – Kadmat Island to Ihavandiffulu Atoll.

<b>2. INDIA WEST COAST, LAKSHADWEEP, INDIAN OCEAN.</b>		
<b>Notice</b>	<b>Charts Affected</b>	<b>Description</b>
127/15	2040.	INDIA – WEST COAST – Porbandar Port – Jetty.
164/18	21 – 292 (INT 7021) – 253 (INT 7328) – 206.	INDIA – WEST COAST – Veraval to Diu Head – Construction work.
076/19	292 (INT 7021) – 293 (INT 7022) – 255 (INT 7334) – 211 – 2016 (INT 7336) – 2076 (INT 7338) – 2123.	INDIA – WEST COAST – Ulwa Channel – Construction Work.
120/19	21 – 251 (INT 7318) – 252 (INT 7325) – 203 (INT 7319) – 2068 – 2031 (INT 7326) – 2013 (INT 7324).	INDIA – WEST COAST – Gulf of Kachchh – Port of Okha – Construction Work.
180/19	292 (INT 7021) – 253 (INT 7328) – 254 (INT 7331) – 207 – 2081 (INT 7342) – 2100.	INDIA – WEST COAST – Gulf of Khambhat – Approaches to Port Pipavav – Construction Work.
091/20	21 – 22 (INT 752) – 292 (INT 7021) – 293 (INT 7022) – 255 (INT 7334) – 211 – 2016 (INT 7336) – 2076 (INT 7338).	INDIA – WEST COAST – Jawaharlal Nehru Port and Trombay – Construction work.
094/20	21 – 22 (INT 752) – 292 (INT 7021) – 293 (INT 7022) – 255 (INT 7334) – 211 – 2016 (INT 7336) – 2076 (INT 7338).	INDIA – WEST COAST – Jawaharlal Nehru Port and Trombay – Construction work.
095/21	2106 – 2079 (INT 7329) – 2068 – 203 (INT 7319) – 21.	INDIA – WEST COAST – GULF OF KACHCHH – Mundra Port- Construction Work.
118/21	2076 (INT 7338) – 2016 (INT 7336) – 211 – 255 (INT 7334) – 292 (INT 7021) – 293 (INT 7022) – 21-22 (INT 752).	INDIA – WEST COAST – Jawaharlal Nehru Port and Trombay – Construction activity.

<b>2. INDIA WEST COAST, LAKSHADWEEP, INDIAN OCEAN. (Continued).</b>		
129/21	21 – 22 (INT 752) – 292(INT 7021) – 293(INT 7022) – 255(INT 7334) – 211 – 2016(INT 7336) – 2076(INT 7338).	INDIA –WEST COAST – Jawaharlal Nehru Port and Trombay- Construction work.
098/22	21 – 292 (INT 7021) – 253 (INT 7328) – 254 (INT 7331) – 207 – 209 – 2081 (INT 7342) – 2100 (INT 7344) – 2101 (INT 7347).	INDIA –WEST COAST – Approaches to Hazira – Construction Work.
215/22	203 (INT 7319) – 2068 – 2080 – 2079 (INT 7329) – 2106.	INDIA – WEST COAST – Gulf of Kachchh – Mundra Port – Buoy.
216/22	21 – 203 (INT 7319) – 2068 – 2080 – 2079 (INT 7329) – 2106.	INDIA – WEST COAST – Gulf of Kachchh – Mundra Port – Dredging.
218/22	255 (INT 7334) – 256 (INT 7340) – 211 – 212 – 2036 (INT 7352) – 2103.	INDIA – WEST COAST – Dighi Port – Dredging.
220/22	21 – 292 (INT 7021) – 254 (INT 7331) – 208 – 2039 – 2082 – 2110.	INDIA – WEST COAST – Gulf to Khambhat – Dahej Harbour – Jetty Construction.
047/23	2005 – 2114.	INDIA – WEST COAST – Approaches to Kharo Creek and Mitha Port – Buoys
080/23	31(INT 756).	INDIAN OCEAN – Bay of Bengal – Northern Portion (Krishnapatnam to Bassein River) –Wreck.
116/23	22 (INT 752) – 32 (INT 754) – 220 – 259 (INT 7356) – 260 (INT 7362) – 2029 (INT 7358) – 7071 (INT 71) – 7073 (INT 73) – 7703 (INT 703) – 7706 (INT 706)	INDIA – WEST COAST – Approaches to Kochi – Data Buoys.
131/23	2008 – 2009 – 2010 – 2353.	INDIA – WEST COAST – Karwar naval Harbour – Buoy.
134/23	211 – 212 – 254 (INT 7340) – 255 (INT 7334) – 2036 (INT 7352).	INDIA – WEST COAST – Dighi Harbour (Murud – Janjira) and Approaches – Fairway Buoy.
135/23	2008 – 2120 – 2353.	INDIA – WEST COAST – Karwar Port – Buoy.
142/23	2111 – 2012 – 222 – 223 – 260 (INT 7362) – 261.	INDIA – WEST COAST – Vizhinjam Harbour – Construction Activity.
143/23	2111 – 2012 – 222 – 223 – 260 (INT 7362) – 261	INDIA – WEST COAST – Vizhinjam Harbour – Construction Activity.
163/23	22 (INT 752) – 212 – 256 (INT 7340) – 293 (INT 7022) – 2011 – 2105	INDIA – WEST COAST – Jaigarh and Angre Ports – Construction Activity.
179/23	21 - 203 (INT 7319) - 2068 - 2080 – 2079 (INT 7329) - 2106.	INDIA – WEST COAST – Gulf of Kachchh – Mundra Port – Construction and Extension of Berth.
185/23	32 (INT 754) – 224 – 262 (INT 7365) – 2075 (INT 7366).	INDIA – WEST COAST – Tuticorin Harbour; Approaches to Tuticorin – Construction Activity.
190/23	21 – 22 (INT 752) – 268 (INT 7353) – 273 – 292 (INT 7021) – 293 (INT 7022) – 294 (INT 7023) – 295 – 2047 – 7070 (INT 70) – 7071 (INT 71) – 7072 (INT 72) – 7073 (INT 73) – 7702 (INT 702) – 7703 (INT 703) – 7705 (INT 705) – 7706 (INT 706) – 7707 (INT 707).	INDIA – WEST COAST – Arabian Sea – Data Buoys and Tsunami Buoys.
037/24	260 (INT 7362) – 261 (INT 7363) – 222 – 223 – 2012	INDIA – WEST COAST – Vizhinjam Anchorage, Alleppey Anchorage – Buoys.
044/24	21 – 22 (INT 752) – 32 (INT 754) – 214 – 221 – 251 (INT 7318) – 253 (INT 7328) – 258 (INT 7348) – 260 (INT 7362) – 261 (INT 7363) – 263 (INT 7383) – 271 – 272 – 291 – 292 (INT 7021) – 293 (INT 7022) –	INDIA – WEST COAST – Arabian Sea – ADCP Moorings.



2. INDIA WEST COAST, LAKSHADWEEP, INDIAN OCEAN. (Continued).		
	294 (INT 7023) – 295 (INT 7024).	
060/24	21 – 22 (INT 752) – 204 – 207 – 209 – 210 – 211 – 252 (INT 7325) – 253 (INT 7328) – 254 (INT 7331) – 255 (INT 7334) – 256 (INT 7340) – 271 – 291 – 292 (INT 7021) – 293 (INT 7022) – 7071 (INT 71) – 7072 (INT 72) – 7073 (INT 73) – 7705 (INT 705) – 7706 (INT 706).	INDIA – WEST COAST – Arabian Sea – Oil Rigs.

3. INDIA EAST COAST, ANDAMAN NICOBAR, SRI LANKA, BANGLADESH, MYANMAR.		
<u>Notice</u>	<u>Charts Affected</u>	<u>Description</u>
090/18	31 (INT 756) – 32 (INT 754) – 391 – 354 (INT 7408) – 308 – 3002 (INT 7410) – 3012 (INT 7411).	INDIA – EAST COAST – Vishakhapatnam Harbour – Construction Work.
188/19	4013.	ANDAMAN SEA – INDIA – ANDAMAN ISLANDS – Shaheed Dweep Pier (Neill Island Pier) – Construction Work.
211/19	4043.	ANDAMAN SEA – INDIA – ANDAMAN ISLANDS – Ariel Bay – Construction Work.
237/19	41 (INT 757).	BAY OF BENGAL AND ANDAMAN SEA – Andaman Sea – Dredging.
244/19	31 (INT 756).	INDIAN OCEAN – Bay of Bengal – Northern Portion (Krishnapatnam to Bassein River) – Drilling Operation.
090/21	31 (INT 756).	INDIAN OCEAN – Bay of Bengal – Northern Portion (Krishnapatnam to Bassein River) – wreck.
103/21	224 -223- 262 (INT 7365) – 32 (INT 754).	INDIA – SOUTH EAST COAST – GULF OF MANNAR – Manappad to Setukkarai – Construction Activities.
119/21	31 (INT 756).	INDIAN OCEAN – Bay of Bengal – Northern Portion (Krishnapatnam to Bassein River) – wreck.
177/21	31 (INT 756).	INDIAN OCEAN – Bay of Bengal – Northern Portion (Krishnapatnam to Bassein River) – wreck.
202/21	31 (INT 756) – 351 (INT 7419)	INDIA – EAST COAST – Paradip to Pussur River – Wreck.
064/22	31 (INT 756)	INDIAN OCEAN – Bay of Bengal – Northern Portion (Krishnapatnam to Bassein River) – Wreck.
073/22	31 (INT 756)	INDIAN OCEAN – Bay of Bengal – Northern Portion (Krishnapatnam to Bassein River) – Wreck.
096/22	31 (INT 756)	INDIAN OCEAN – Bay of Bengal – Northern Portion (Krishnapatnam to Bassein River) – Wreck.
097/22	31 (INT 756)	INDIAN OCEAN – Bay of Bengal – Northern Portion (Krishnapatnam to Bassein River) – Wreck.
115/22	32 (INT 754) – 262 (INT 7365) – 223 – 224	INDIA – SOUTH COAST – Kolachel to Manappad – Jetty Construction.
128/22	31 (INT 756)	INDIAN OCEAN – Bay of Bengal – Northern Portion (Krishnapatnam to Bassein River) – Wreck.
139/22	351 (INT 7419)	INDIA – EAST COAST – Paradip to Pussur River – Buoy.
140/22	31 (INT 756)	INDIAN OCEAN – Bay of Bengal – Northern Portion (Krishnapatnam to Bassein River) – Wreck.
141/22	31 (INT 756)	INDIAN OCEAN – Bay of Bengal – Northern Portion (Krishnapatnam to Bassein River) – Wreck.
180/22	31 (INT 756)	INDIAN OCEAN – Bay of Bengal – Northern Portion (Krishnapatnam to Bassein River) – Dredging.

<b>3. INDIA EAST COAST, ANDAMAN NICOBAR, SRI LANKA, BANGLADESH, MYANMAR. (Continued).</b>		
195/22	31 (INT 756)	INDIAN OCEAN – BAY OF BENGAL – Northern Portion (Krishnapatnam to Bassein River) – Drilling.
204/22	31 (INT 756)	INDIAN OCEAN – Bay of Bengal – Northern Portion (Krishnapatnam to Bassein River) – Wreck.
223/22	31 (INT 756)	INDIAN OCEAN – Bay of Bengal – Northern Portion (Krishnapatnam to Bassein River) – Wreck.
033/23	31 (INT 756)	INDIA OCEAN – BAY OF BENGAL – Northern Portion – Krishnapatnam to Bassein River – Anchorage.
040/23	32 (INT 754) – 33 (INT 755) – 391 – 356 (INT 7400) – 313 – 3001 (INT 7402) – 3028 (INT 7404).	INDIA – EAST COAST – Kamarajar Port – Jetty Construction.
042/23	31 (INT 756)	INDIAN OCEAN – Bay of Bengal – Northern Portion (Krishnapatnam to Bassein River) – Wreck.
059/23	3010 (INT 7418) – 3041	INDIA – EAST COAST – Paradip Anchorage – Buoys.
075/23	31 (INT 756) – 32 (INT 754) – 355 (INT 7405) – 391 – 3005	INDIA – EAST COAST – Machilipatnam Anchorage – Construction Activity.
076/23	31 (INT 756) – 32 (INT 754) – 354 (INT 7408) – 391 – 3042.	INDIA – EAST COAST – Approaches to Kakinada – Construction Activity.
077/23	31 (INT 756) – 32 (INT 754) – 355 (INT 7405) – 391 – 3008 – 3026.	INDIA – EAST COAST – Nizampatnam Anchorage – Construction Activity.
078/23	31 (INT 756) – 32 (INT 754) – 356 (INT 7400) – 391.	INDIA – EAST COAST – Chennai to Ramayapatnam – Construction Activity.
079/23	31 (INT 756) – 32 (INT 754) – 355 (INT 7405) – 356 (INT 7400) – 391.	INDIA – EAST COAST – Chennai to Ramayapatnam – Construction Activity.
110/23	31 (INT 756)	INDIAN – OCEAN – Bay of Bengal – Northern Portion (Krishnapatnam to Bassein River) – Wreck
146/23	31 (INT 756)	INDIAN OCEAN – Bay of Bengal – Northern Portion (Krishnapatnam to Bassein River) – Wreck.
151/23	351 (INT 7419).	INDIA – EAST COAST – Paradip to Pussur River – Buoy.
152/23	31 (INT 756) – 32 (INT 754) – 33 (INT 755) – 304 – 305 – 308 (INT 7409) – 352 (INT 7416) – 353 (INT 7413) – 354 (INT 7408) – 355 (INT 7405) – 356 (INT 7400) – 357 (INT 7397) – 391 – 7706 (INT 706).	INDIA – EAST COAST – Bay of Bengal – ADCP Moorings.
181/23	31 (INT 756)	INDIAN – OCEAN – Bay of Bengal – Northern Portion (Krishnapatnam to Bassein River) – Installation Activity
187/23	31 (INT 756)	INDIAN OCEAN – Bay of Bengal – Northern Portion (Krishnapatnam to Bassein River) – Wreck.
049/24	21 - 31 (INT 756) - 32 (INT 754) - 33 (INT 755) – 41 (INT 757) - 291 - 315 - 316- 358 (INT 7394) - 7070 (INT 70) - 7071 (INT 71) - 7072 (INT 72) - 7073 (INT 73) - 7508 (INT 508) – 7701 (INT 701) - 7702 (INT 702) - 7703 (INT 703) - 7705 (INT 705) - 7706 (INT 706) - 7707 (INT 707) - 7708 (INT 708).	INDIAN OCEAN - NORTHERN PART - RAMA Buoys.
057/24	31 (INT 756) – 32 (INT 754) – 33 (INT 755) – 41 (INT 757) – 313 – 356 (INT 7400) – 357 (INT 7397) – 391 – 404 (INT 7439) – 405 (INT 7440) – 472 (INT 7032) – 473 (INT 7031) – 3001 (INT 7402) – 3004 (INT 7403) – 4115 – 7071 (INT 71) – 7073 (INT 73) – 7706 (INT 706) – 7707 (INT 707).	INDIA – EAST COAST – Bay of Bengal – Andaman Sea – Data Buoys and Tsunami Buoys.

**3. INDIA EAST COAST, ANDAMAN NICOBAR, SRI LANKA, BANGLADESH, MYANMAR.  
(Continued).**

061/24	31 (INT 756) – 32 (INT 754) – 304 – 352 (INT 7416) – 353 (INT 7413) – 355 (INT 7405) – 391 – 7071 (INT 71) – 7073 (INT 73) – 7706 (INT 706).	INDIA – EAST COAST – Bay of Bengal – Oil Rigs.
062/24	21 – 22 (INT 752) – 31 (INT 756) – 32 (INT 754) – 33 (INT 755) – 205 – 206 – 211 – 212 – 213 – 219 – 221 – 222 – 223 – 224 – 252 (INT 7325) – 253 (INT 7328) – 255 (INT 7334) – 256 (INT 7340) – 258 (INT 7348) – 259 (INT 7356) – 260 (INT 7362) – 261 – 262 (INT 7365) – 263 (INT 7383) – 272 – 292 (INT 7021) – 293 (INT 7022) – 294 – 302 – 305 – 308 (INT 7409) – 351 (INT 7419) – 352 (INT 7416) – 353 (INT 7413) – 354 (INT 7408) – 356 (INT 7400) – 357 (INT 7397) – 391 – 2012 – 2028 – 2032 – 2037 – 2048 – 2104 – 2120 – 2121 – 3002 (INT 7410) – 3034 – 3035 – 3043 – 7071 (INT 71) – 7072 (INT 72) – 7073 (INT 73) – 7703 (INT 703) – 7705 (INT 705) – 7706 (INT 706) – 7707 (INT 707).	INDIAN OCEAN – Northern Part – Wave Rider Buoys.

**4. MALACCA STRAIT, SINGAPORE STRAIT AND SUMATERA.**

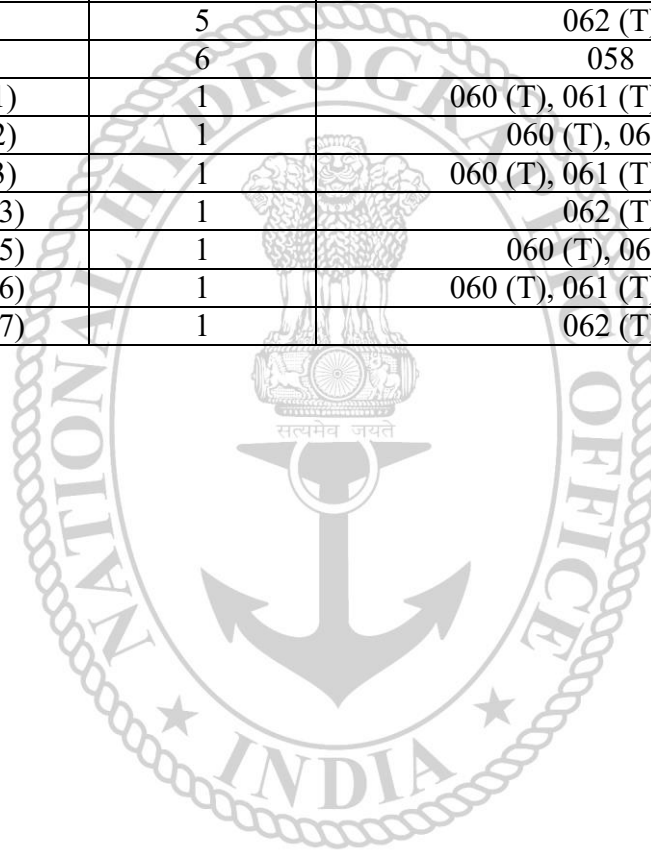
<u>Notice</u>	<u>Charts Affected</u>	<u>Description</u>
039/24	7703 (INT 703) – 7706 (INT 706) – 7707 (INT 707).	INDIAN OCEAN – Maldives to Sumatera – ADCP Moorings.

**SECTION – I**

The list of charts affected by the Notices 058 to 062 contained in this edition is as follows:-

<b>CHART NUMBER</b>	<b>FOLIO NO.</b>	<b>NOTICE NO.</b>
21	2	060 (T), 062 (T)
22 (INT 752)	3	060 (T), 062 (T)
31 (INT 756)	5	061 (T), 062 (T)
32 (INT 754)	5	061 (T), 062 (T)
33 (INT 755)	5	062 (T)
204	2	060 (T)
205	2	062 (T)
206	2	062 (T)
207	2	060 (T)
209	3	060 (T)
210	3	060 (T)
211	3	060 (T), 062 (T)
212	3	062 (T)
213	3	062 (T)
219	4	062 (T)
221	4	062 (T)
222	4	062 (T)
223	4	062 (T)
224	5	062 (T)
252 (INT 7325)	2	060 (T), 062 (T)
253 (INT 7328)	2	060 (T), 062 (T)
254 (INT 7331)	3	060 (T)
255 (INT 7334)	3	060 (T), 062 (T)
256 (INT 7340)	3	060 (T), 062 (T)
258 (INT 7348)	4	062 (T)
259 (INT 7356)	4	062 (T)
260 (INT 7362)	4	062 (T)
261 (INT 7363)	4	062 (T)
262 (INT 7365)	5	062 (T)
263 (INT 7383)	5	062 (T)
271	2	060 (T)
272	4	062 (T)
291	2	060 (T)
292 (INT 7021)	2	060 (T), 062 (T)
293 (INT 7022)	3	060 (T), 062 (T)
294 (INT 7023)	4	062 (T)
302	5	062 (T)
304	5	061 (T)
305	5	062 (T)
308 (INT 7409)	5	062 (T)
351 (INT 7419)	5	062 (T)
352 (INT 7416)	5	061 (T), 062 (T)
353 (INT 7413)	5	061 (T), 062 (T)
354 (INT 7408)	5	062 (T)
355 (INT 7405)	5	061 (T)
356 (INT 7400)	5	062 (T)

357 (INT 7397)	5	062 (T)
391	5	061 (T), 062 (T)
2004 (INT 7359)	4	059
2012	4	062 (T)
2028	3	062 (T)
2032	4	062 (T)
2037	5	062 (T)
2045 (INT 7360)	4	059
2048	4	062 (T)
2104	4	062 (T)
2120	3	062 (T)
2121	2	062 (T)
3002 (INT 7410)	5	062 (T)
3034	5	062 (T)
3035	5	062 (T)
3043	5	062 (T)
4253	6	058
7071 (INT 71)	1	060 (T), 061 (T), 062 (T)
7072 (INT 72)	1	060 (T), 062 (T)
7073 (INT 73)	1	060 (T), 061 (T), 062 (T)
7703 (INT 703)	1	062 (T)
7705 (INT 705)	1	060 (T), 062 (T)
7706 (INT 706)	1	060 (T), 061 (T), 062 (T)
7707 (INT 707)	1	062 (T)



**SECTION – II****PERMANENT NOTICES**

**\*058 (07/24) INDIA – ANDAMAN SEA LITTLE ANDAMAN ISLANDS – Approaches to Port Blair – Accompanying Block.**

Source: NHO, Dehradun.

**Chart 4253** [*previous update 175/23*]

Insert accompanying block, centered on;

11° 40′·16N., 092° 41′·74E.

**\*059 (07/24) INDIA WEST COAST – Port of Kochi – Buoys.**

Source: IH-102, INS Investigator.

**Chart 2004 (INT 7359)** [*previous update 190/22*]

Insert



09° 58′·00N., 076° 15′·34E.



09° 57′·94N., 076° 15′·40E.

**Chart 2045 (INT 7360)** [*previous update 048/21*]

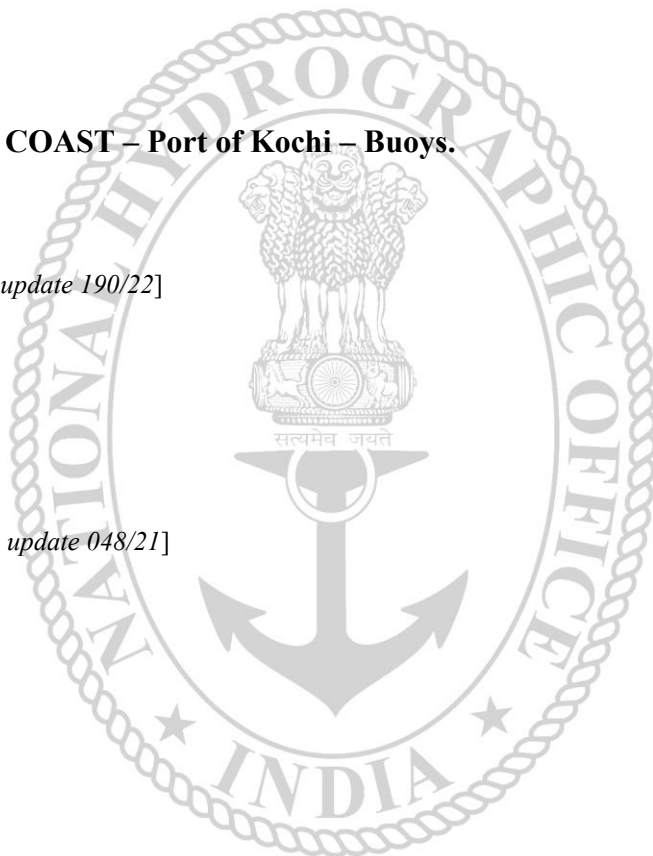
Insert



09° 58′·00N., 076° 15′·34E.



09° 57′·94N., 076° 15′·40E.



**Section – III**

**TEMPORARY AND PRELIMINARY NOTICES**

1. It is brought to the information to the users that same or all information contained in this Temporary Notices to mariner may have been included in the relevant ENC's.
2. New TPNMs are now part of ENC updates from 01 Oct 22 onwards.
3. All in force Temporary and Preliminary Notices are available for visualisation along with details of affected Charts and ENCs for mariners on **INDIAN WARNINGS INFORMATION AND NAVIGATION SERVICES (INDIA – WINS)** on [www.hydrobharat.gov.in](http://www.hydrobharat.gov.in).

<b>*060 (T) (07/24)</b>	<b>INDIA – WEST COAST – Arabian Sea – Oil Rigs.</b>
Source: NCD, Mumbai.	
1. List of Oil Rigs is as follows: -	
<b>Rig Name</b>	<b>Position</b>
Aban II	19° 48'.29N., 071° 41'.20E.
Aban III	19° 32'.05N., 071°19'.16E.
Aban IV	19° 23'.55N., 071°21'.53E.
Aban VIII	19° 08'.72N., 071° 55'.25E.
Admarine 9	19° 19'.46N., 071° 14'.10E.
CE Thornton	19° 15'.69N., 071° 21'.08E.
Compact Driller	19° 39'.51N., 071° 17'.55E.
Discovery 1	19° 18'.78N., 072° 01'.56E.
FG MC Clinttok	18° 08'.15N., 072° 25'.28E.
Foresight Driller IX	18° 33'.72N., 072° 17'.66E.
Great Drill Chaaru	18° 16'.38N., 072° 22'.82E.
Great Drill Chetna	21° 39'.46N., 068° 49'.26E.
<b>Great Drill Chaaya</b>	<b>20° 13'.31N., 071° 54'.79E.</b>
Great Drill Chitra	19° 21'.46N., 071° 50'.13E.
<b>Jindal Star</b>	<b>19° 27'.59N., 071° 24'.98E.</b>
Jindal Supreme	20° 43'.29N., 071° 43'.77E.
JT Angel	18° 34'.96N., 072° 14'.46E.
Jindal Explorer	19° 10'.88N., 072° 07'.02E.
Key Singapore	18° 55'.85N., 072° 18'.35E.
<b>Parameswara</b>	<b>19° 22'.48N., 071° 21'.59E.</b>
Ron Tappmeyer	18° 45'.65N., 072° 19'.22E.
Sagar Bhushan	19° 42'.94N., 071° 00'.51E.
Sagar Vijay	18° 15'.39N., 070°42'.83E.
Sagar Jyoti	19° 15'.63N., 071° 17'.79E.
Sagar Kiran	20° 02'.25N., 072° 23'.91E.
Sagar Ratna	20° 00'.34N., 072° 24'.83E.
Sagar Uday	19° 27'.52N., 071° 16'.42E.
Sagar Samrat	18° 58'.43N., 071° 37'.44E.
Sagar Gaurav	20° 30'.43N., 072° 26'.90E.
<b>Trident 2</b>	<b>19° 34'.16N., 071° 07'.97E.</b>
<b>Trident 12</b>	<b>18° 45'.23N., 072° 18'.00E.</b>
Vivekananda 1	18° 37'.94N., 072° 14'.22E.
Virtue 1	19° 00'.48N., 072° 09'.07E.
Victory Driller	19° 15'.30N., 071° 21'.79E.
Armada Sterling I	18° 35'.24N., 071° 02'.08E.
Armada Sterling II	19° 10'.50N., 070° 56'.70E.

Admarine 10	19° 29'.83N., 071° 19'.49E.
DS Fossil	19° 23'.19N., 071° 17'.41E.
DS Fortune	19° 01'.74N., 071° 25'.58E.
<b>2. All Highlighted Oil Rigs reflects changes in position of respective Oil Rigs from previous Notice.</b>	
3. All vessels operating in vicinity are to maintain a clearance of 01 NM off the oil rigs.	
4. All positions referred to WGS 84 datum	
<b>Charts Affected – 21 – 22 (INT 752) – 204 – 207 – 209 – 210 – 211 – 252 (INT 7325) – 253 (INT 7328) – 254 (INT 7331) – 255 (INT 7334) – 256 (INT 7340) – 271 – 291 – 292 (INT 7021) – 293 (INT 7022) – 7071 (INT 71) – 7072 (INT 72) – 7073 (INT 73) – 7705 (INT 705) – 7706 (INT 706).</b>	
<i>Former INTM 056 (T)/24 is cancelled.</i>	

<b>*061 (T) (07/24)</b>	<b>INDIA – EAST COAST – Bay of Bengal – Oil Rigs.</b>
Source: NCD, Mumbai.	
1. List of Oil Rigs is as follows: -	
<b>Rig Name</b>	<b>Position</b>
<b>West Polaris</b>	<b>19° 28'.44N., 086° 18'.66E.</b>
Armada Sterling V	16° 22'.22N., 082° 19'.30E.
KG D6 Ruby	16° 33'.00N., 082° 35'.30E.
<b>2. All Highlighted Oil Rigs reflects changes in position of respective Oil Rigs from previous Notice.</b>	
3. All vessels operating in vicinity are to maintain a clearance of 01 NM off the oil rigs.	
4. All positions referred to WGS 84 datum.	
<b>Charts Affected – 31 (INT 756) – 32 (INT 754) – 304 – 352 (INT 7416) – 353 (INT 7413) – 355 (INT 7405) – 391 – 7071 (INT 71) – 7073 (INT 73) – 7706 (INT 706).</b>	
<i>Former INTM 053 (T)/24 is cancelled.</i>	

<b>*062 (T) (07/24)</b>	<b>INDIAN OCEAN – Northern Part – Wave Rider Buoys.</b>
Source: INCOIS.	
1. Moored yellow coloured Wave Rider Buoys (WRB) are deployed by INCOIS in following positions:-	
<b>WRB Buoy</b>	<b>Positions</b>
WRB Digha	21° 24'.70N 087° 38'.68E
<b>WRB Gopalpur</b>	<b>19° 15'.07N 084° 56'.27E</b>
WRB Kanyakumari	08° 06'.48N 077° 17'.88E
WRB Kollam	08° 52'.10N 076° 32'.80E
WRB Kozhikkode	11° 18'.02N 075° 39'.68E
WRB Krishnapatnam	14° 16'.67N 080° 11'.58E
WRB Pondicherry	11° 54'.75N 079° 50'.70E
WRB Ratnagiri	16° 58'.60N 073° 15'.20E
WRB Tuticorin	08° 52'.98N 078° 17'.75E
WRB Veraval	20° 53'.02N 070° 23'.32E
WRB Versova	19° 07'.92N 072° 44'.22E
WRB Visakhapatnam	17° 38'.30N 083° 15'.93E
WRB Vizhinjam	08° 21'.58N 076° 59'.88E
<b>2. All Highlighted Buoys reflects changes in position of respective buoys from previous Notice.</b>	
3. All positions referred to WGS 84 datum.	
4. Vessels operating in vicinity are to maintain a safe distance from buoys and exercise caution.	
<b>Charts Affected – 21 – 22 (INT 752) – 31 (INT 756) – 32 (INT 754) – 33 (INT 755) – 205 – 206 – 211 – 212 – 213 – 219 – 221 – 222 – 223 – 224 – 252 (INT 7325) – 253 (INT 7328) – 255 (INT 7334) – 256 (INT 7340) – 258 (INT 7348) – 259 (INT 7356) – 260 (INT 7362) – 261 – 262 (INT 7365) – 263 (INT 7383) – 272 – 292 (INT 7021) – 293 (INT 7022) – 294 – 302 – 305 – 308 (INT 7409) – 351 (INT 7419) – 352 (INT 7416) – 353 (INT 7413) – 354 (INT 7408) – 356 (INT 7400) – 357 (INT 7397) – 391 – 2012 – 2028 – 2032 – 2037 – 2048 – 2104 – 2120 – 2121 – 3002 (INT 7410) – 3034 – 3035 – 3043 – 7071 (INT 71) – 7072 (INT 72) – 7073 (INT 73) – 7703 (INT 703) – 7705 (INT 705) – 7706 (INT 706) – 7707 (INT 707).</b>	
<i>Former INTM 043 (T)/24 is cancelled.</i>	



**SECTION – IV****MARINE INFORMATION****1. NAVTEX TRANSMISSION**

Status of MSI Promulgation by NAVTEX Stations is as follows:-

Mauritius (Cassis)	- Operational
Seychelles (Mahe)	- Operational
Myanmar (Yangon, Myeik, Kyau Phyu)	- Operational

Following new NAVTEX stations along the Indian coast have commenced operations:-

<b>INTERNATIONAL NATIONAL NAVTEX FREQUENCY - 518 kHz</b>								
<b>Sl.</b>	<b>Station Name</b>	<b>B1</b>	<b>Broad Cast Timings in UTC</b>					
(a)	Veraval	H	0110	0510	0910	1310	1710	2110
(b)	Vengurla Point	J	0130	0530	0930	1330	1730	2130
(c)	Muttam Point	L	0150	0550	0950	1350	1750	2150
(d)	Porto Novo	O	0220	0620	1020	1420	1820	2220
(e)	Vakalpudi	Q	0240	0640	1040	1440	1840	2240
(f)	Balasore	S	0300	0700	1100	1500	1900	2300
(g)	Keating Point	V	0330	0730	1130	1530	1930	2330

**2. MISIDENTIFYING FISHING BOATS AS PIRATE SKIFFS**

All merchant vessels entering Indian EEZ are advised that dense fishing activity may be encountered off West Coast of India. Fishing is generally carried out by mechanized boats and single hull boats with outboard motors carrying 4-5 crews using long lines upto 50 NM from coast. The vessels traversing the nets are likely to be approached by fishing boats for safeguarding nets and lines and should not be mistaken as skiffs and PAG's. Masters of vessels to report any suspicious activity of fishing vessels immediately to MRCC (Mumbai) on telephone +91-22-24388065, 24316558, Email: - mrcc-west@indiancoastguard.nic.in. Any suspicious activity of skiffs/ boats to be photographed if possible. Merchant vessels with armed guards on board are to report presence of guards to Indian Navy/Coast Guard while transiting Indian EEZ.

**3. DISPLAY ANOMALIES IN ECDIS**

(a) Mariners are advised that the International Hydrographic Organization (IHO) check data set shows that some ECDIS systems fail to display some significant underwater features in the standard display mode. The use of this check data set, issued through ENC service providers and available from the IHO website [www.iho.int](http://www.iho.int), to check the operation of ECDIS is strongly recommended. JRC has confirmed that certain versions of JRC ECDIS fail to display some types of wreck and obstructions, including stranded wrecks, in any display mode. Where JRC ECDIS is in use, paper charts should be the primary means of navigation until the ECDIS has been proved to operate correctly. See [www.jrc.co.jp/eng/product/marine/whatsnew/20120313/index.html](http://www.jrc.co.jp/eng/product/marine/whatsnew/20120313/index.html) for further information.

(b) Some Electronic Chart Display and Information Systems (ECDIS) may exhibit operating anomalies. The International Maritime Organization's (IMO) circular SN.1/CIRC.312 pages /imodocs.aspx (registration required) lists identified anomalies, Their characteristics and remedial advice. Mariners are reminded that they should access the International Hydrographic Organization (IHO) data presentation and performance check (DPPC) dataset (news links of <http://www.iho.int/srv1>) and ensure that all installed ECDIS units are checked.

#### 4. **SAFETY FAIRWAYS, RECOMMENDED ROUTES, TRAFFIC SEPARATION SCHEME**

The Director General Shipping has established Safety fairways, recommended routes and traffic separation scheme (TSS) in restricted Indian waters including the offshore development area to enhance safety of navigation. The details of coordinates are published in the fortnightly Indian Notices to Mariners.

- (a) **Safety Fairways:** An area within which permits are not granted for the erection of oil or gas related structures. The use of a safety fairway is not usually mandatory, but is recommended. Safety fairways have been promulgated in and round offshore development area in Arabian Sea up to the Exclusive Economic Zone (EEZ) due to increased weather related marine accidents and dense traffic. These are mandatory for all Indian ships and vessels transiting through the ODA and recommendatory for all foreign flag ships and vessels irrespective of size.
- (b) **Traffic Separation Schemes (TSS):** The TSS is mandatory for all Indian and foreign flag ships and vessels entering and leaving.

#### 5. **GAGAN SYSTEM COMMISSIONED FOR OPERATIONS**

The GAGAN System is now commissioned for safety of life, civil aviation, and en- route operations in addition to all other non-aviation applications. The GAGAN signal is being broadcasted through GSAT-8 and GSAT-10 with PRN127& 128 respectively. All the GPS users are requested to enable SBAS functionality in their receivers, configure it to receive PRN- 127& 128 and avail the benefits of GAGAN in terms of increased accuracy and reliability. There may be occasional signal outages due to system up-gradation activities.

#### 6. **Usage of Thuraya, Iridium and other such Satellite Communication in Indian Waters-Reg.**

- (a) The Directorate General of Shipping through DGS Order No. 02 of 2012 dated 17.05.2012 had banned the usage of Thuraya, Iridium and other such satellite in the Indian Waters.
- (b) Thuraya Satellite Equipment is not an integral part of Maritime Radio communication system under Global Maritime Distress and Safety Systems (GMDSS) and its usage is continued to be banned in Indian Waters.
- (c) Whereas, Regulation 4.1- GMDSS Satellite Providers, which emphasizes that, the Maritime Safety Committee shall determine the criteria, procedures and arrangements for the evaluation, recognition, review and oversight of the provision of recognized mobile satellite services in the GMDSS pursuant to the provisions of SOLAS Chapter-IV.
- (d) Whereas, Maritime Safety Committee vide Resolution MSC 451(99) dated 24 May 2018 had recognized Iridium Satellite LLC to provide Safety Voice, Short-Burst data and enhanced group calling services for use in the Global Maritime Distress and Safety System (GMDSS). The Iridium Satellite service is fully operational since December 2020 and being part of SOLAS Chapter - IV as one of the recognized mobile satellite service.
- (e) Under GMDSS, the usage of Iridium Mobile Satellite communication equipment in the Indian Waters are considered subject to the conditions as outlined under;
- (i) Merchant ships may install and keep the Iridium equipment active in Indian Territorial waters, provided the equipment is registered and certified as per the prevailing rules of the Flag of the ship and is used only onboard ship and the portable Iridium sets may not be carried onto Indian Land Territory.
- (ii) Iridium Satellite equipment shall be used in GMDSS exclusively for Maritime Radio communications relating to Distress and Safety, Search and Rescue and for receiving Maritime Safety Information (MSI) from ship's fixed installations only.
- (iii) The ships transiting or visiting in Indian waters shall continue to declare IMEI number of the equipment in the Pre-Arrival Notification on Security (PANS).

- (f) The ship-owners, ship-masters and ship-agents shall mandatorily require to declare details of such satellite phones prior arrival into Indian Waters through the Pre-Arrival Notification on Security (PANS) systems.
- (g) The unauthorized usage of Thuraya, Iridium and other such Satellite equipment shall be prosecuted under Section-6 of Indian Wireless Act and Section-20 of Indian Telegraph Act.
- (h) The ship-Owners, Ship-Masters, Ship-Operators, Ship-Agents and other stake holders are intimated for strict compliance of this DGS Order.
- (j) This Directorate General of Shipping order No. 09 of 2023 supersedes previous DGS order No. 02 of 2012 dated 17.05.2012 and is entry into force with immediate effect.

## 7. **CAUTIONARY NOTE**

There is a finite amount of lag between publication of large and small scale Indian Nautical Charts. To avoid uncertainty the mariners are advised to use large scale charts for coastal navigation wherever applicable and available. In addition, mariners are to refer large scale charts in conjunction with small scale charts in areas where both overlap during both planning and conduct of passage.

## 8. **ADVISORY FOR ALL VESSELS NAVIGATING INDIAN WATERS**

- (a) All vessels navigating in Indian waters are cautioned to keep a sharp look-out for fishing vessels and small crafts, as there have been several incidents of collisions with such vessels in the past resulting in loss of innocent lives as well as damage to property.
- (b) It is further cautioned that all vessels need to exercise extreme care while navigating during hours of darkness as such vessels are generally of primitive built (wood/fibre/etc) due to which it may not be detected on ship's radar, especially during adverse weather conditions. Also, such vessels may not be properly lit, or sometimes, only one vessel may be lit among multiple vessels in a cluster.
- (c) The general areas of concern on the west coast of India are the areas of convergence and divergence of traffic, mainly between Mangalore to Kanyakumari (Cape Comorin). Further, in these areas, additional caution needs to be exercised and wide berth be given to all such vessels.
- (d) All fishing vessels are also cautioned to avoid fishing in areas having high density traffic. All fishing vessels are also required to always maintain proper lookout by sight, hearing and by all available means and comply with all applicable provisions of Collision Regulations.

**List of Indian Chart Agents**

<p><b>OSA Books and Periodicals</b> R-246, Greater Kailash –I, New Delhi - 110 048 Tel/Fax: +91-11-26418643, 46557337, Mob: 9971093992 Email: <a href="mailto:rpani246@gmail.com">rpani246@gmail.com</a></p>	<p><b>M/s VDO Marine Insrtuments</b> Shanghar Building, PO Bag No – 645, 45/271, Corner of Bristow &amp; Naval Road, Willingdon Island, Kochi – 682 003 Tel: +91 484 2667157 Fax: +91 484 2667121 Email: <a href="mailto:atmain@md4.vsnl.net.in">atmain@md4.vsnl.net.in</a></p>
<p><b>M/s Global Charts &amp; Nav. Aids Pvt. Limited</b> 1A, Goa Mansion, Ground Floor, 58, Dr. SunderlalBahl Path (Goa Street), Fort, Mumbai - 400 001 Tel: 91-22-22626318, 22626380 Fax: 91-22-22621488 Email: <a href="mailto:sales@globalcharts.in">sales@globalcharts.in</a> Web: <a href="http://www.globalcharts.com.sg">www.globalcharts.com.sg</a></p>	<p><b>SMS Marine Private Ltd</b> 505, Raheja Arcade, Sector 11, CBD Belapur, Navi Mumbai – 400 614 Tel: +91-22-62233326, Fax: 022-67939504 Mobile: +91 9820 238 542 Email: <a href="mailto:info@c-map.co.in">info@c-map.co.in</a> , <a href="mailto:raj.chakravorty@smsmap.com">raj.chakravorty@smsmap.com</a> Web: <a href="http://www.smsmaps.co.in">www.smsmaps.co.in</a></p>
<p><b>M/s C &amp; C Marine Combine</b> 25 Bank Street, 1<sup>st</sup> Floor, Fort Mumbai - 400 023 Tel: 91-22- 22660017/0018/0525/1937 Ext: 32 Tel: 91-22-22672143 Fax: 91-22-22670896 Email: <a href="mailto:vijay@ccmarine.in">vijay@ccmarine.in</a>, <a href="mailto:sales@ccmarine.in">sales@ccmarine.in</a></p>	<p><b>M/s Global Marine Infratech Pvt. Ltd.</b> SikshaSandan, Ground Floor, Plot No. ND7, VIP Area, IRC Village, Bhubaneswar – 751015 Tel: +91-674-2550599, Fax: +91-674-2551899 Cell:- +91-9337477799, 7077702499 Email: <a href="mailto:tusarkantha@gmiindia.in">tusarkantha@gmiindia.in</a> Web: <a href="http://www.gmiindia.in">www.gmiindia.in</a></p>
<p><b>M/s JM Maritime Services</b> 24/24C Kavarana Building, Ground Floor, WadiBunder, P.D. Mellow Road, Mumbai – 400 009 Tel: +91 22 23736956, Fax: 022 - 23725083 Cell: +91 9820788357 Email : <a href="mailto:jmms@mtnl.net.in">jmms@mtnl.net.in</a> , <a href="mailto:charts@mtnl.net.in">charts@mtnl.net.in</a></p>	<p><b>L. R. Marine Services</b> 301, 3rd Floor, Biry House, 265, PerinNariman Street, Fort, Mumbai - 400 001. Tel: +91-22-2269 1535, Fax: +91-22-66359148 Cell No: +91 8108926880/ +91 98214 60258 Email: <a href="mailto:lrcharts@gmail.com">lrcharts@gmail.com</a>, <a href="mailto:lrmarine@live.com">lrmarine@live.com</a></p>
<p><b>M/s Lift o Marine</b> Allen’s Mansion, C6, Nungi Station Road, Bata Nagar, Kolkata – 700 140 Tel: +91 9836972027 Fax: 033 24924283 Email: <a href="mailto:sankar@liftmarine.org">sankar@liftmarine.org</a>, <a href="mailto:liftmarine77@gmail.com">liftmarine77@gmail.com</a> Web: <a href="http://www.liftmarine.org">www.liftmarine.org</a></p>	<p><b>IIC Technologies Limited</b> 8-2-350/5/B-22, Road No. 3, Banjara Hills, Hyderabad – 500 034, Telangana Tel: +91 40 39144444 Fax: +91 40 39144455 Email: <a href="mailto:somnath.marthi@iictechnologies.com">somnath.marthi@iictechnologies.com</a> Web: <a href="http://www.iictechnologies.com">www.iictechnologies.com</a></p>
<p><b>M/s Zenith Surveys (I) Pvt. Ltd.</b> Lakhani’sPlam View, First Floor, Office No. 889, Sector 48, Nerul, Navi Mumbai – 400 706 Tel/ Fax: +91-22- 27708011 Email: <a href="mailto:zenithsurveys703@gmail.com">zenithsurveys703@gmail.com</a> <a href="mailto:nyvmane@yahoo.com">nyvmane@yahoo.com</a> Web: <a href="http://www.zenithsurvey.com">www.zenithsurvey.com</a></p>	<p><b>M/s CNC</b> Office No. S-12-92, Haware’s Centurion Premises Coop. Soc. Ltd Plot no 88-91, Sector 19, NERUL, Navi Mumbai – 400706 Tel: +91 22 22660017/ +91 22 49747575 Cell No: +91 9920654848/ +91 7506097212 Email: <a href="mailto:sales@emariner.net">sales@emariner.net</a></p>

**SECTION – V****NAVAREA – VIII WARNINGS IN FORCE.**

1. All in force NAVAREA and NAVTEX messages are available for visualisation along with details of affected Charts and ENC's for mariners on **INDIAN WARNINGS INFORMATION AND NAVIGATION SERVICES (INDIA – WINS)** on [www.hydrobharat.gov.in](http://www.hydrobharat.gov.in).
2. For details of NAVAREA limits and organisation/ coordination, please refer to Notice No. 12 of the Special edition of Indian Notice to Mariners – 2020.
3. NAVAREA VIII Warnings in force as on 01 Apr 24: -

<b>2022 SERIES</b> - 134 162 237 461 519
<b>2023 SERIES</b> - 116 161 178 240 386 455 456 484 574 604 622 655 675 703 733 741 748 750 929 1046 1057
<b>2024 SERIES</b> - 032 036 044 052 066 120 123 126 131 132 142 144 159 160 175 180 181 188 189 194 205 215 246 253 254 258 259 261 262 281 282 288 289 291 296 297 298 305 306 311 316 317 320 321 325 326 327 328 329 330 331 332 333 334

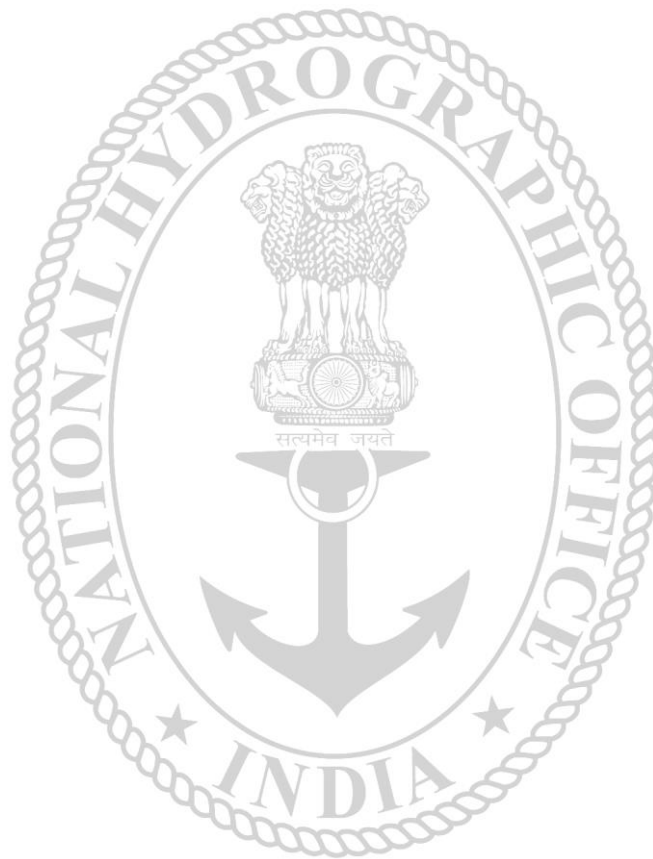
4. NAVAREA VIII Warnings issued during the period from 16 Mar 24 to 31 Mar 24 (both dates inclusive) are as tabulated below: –

<b>293. Arabian Sea - off Somalia.</b> Charts IN 7071 7703 INT 703. MV Ruen reported act of piracy 06-40.58N 052-09.19E at 160941 UTC Mar 24. Vessels advised to keep clear of position and exercise caution. 2. Cancel this MSG 191108 UTC Mar 24.
<b>294. India East Coast - off Visakhapatnam.</b> Charts IN 31 354 INT 7408. Firing scheduled from 200230 to 211400 UTC and from 212000 to 221230 UTC Mar 24 in danger area bounded by 18-03.06N 083-44.4E, 17-42.1N 084-53.3E, 16-35.9N 083-59.8E, 16-51.8N 083-21.5E. Wide berth from area advised. 2. Cancel this MSG 221330 UTC Mar 24.
<b>295. India West Coast - off Trivandrum.</b> Charts IN 22 222 260 261 INT 752. Rocket launch from Thumba (08-31.98N 076-52.05E) scheduled from 200530 to 200700 UTC Mar 24. Danger sector from launcher (a) radius of 05 nm between azimuth 190 and 300 (b) between radii of 45 nm and 75 nm and azimuth 220 and 260. Wide berth from area advised. 2. Cancel this MSG 200800 UTC Mar 24.
<b>296. India West Coast - off Mumbai.</b> Charts IN 21 255 292 INT 7334. Urja with AHT Shakti progressing pipeline survey in vicinity of 18-08.49N 072-22.07E. Wide berth requested. 2. Cancel this MSG 151830 UTC May 24.
<b>297. Bay of Bengal - off Myanmar.</b> Charts IN 41 BA 830 INT 757. Hydrographic survey progressing in area bounded within 15-32N to 16-39N and 093-43E to 094-28.2E. Wide berth requested. 2. Cancel this MSG 131830 UTC May 24.
<b>298. India West Coast - off Bhavnagar.</b> Charts IN 21 208 254 2102 INT 7331. Perigee Lt vessel (21-42.11N 072-18E) retrieved for maintenance from 151630 UTC Mar 24.
<b>299. Cancel NAVAREA VIII MSG 229/24, 238/24, 257/24, 267/24 and this MSG. INTM 056(T) 06/24 refers.</b>
<b>300. Andaman Sea - off Nicobar I.</b> Charts IN 41 7706 INT 757. Firing scheduled from 210330 to 210530 UTC Mar 24 in danger area bounded by 07-33N 094-58E, 09-14N 094-58E, 09-14N 094-08E, 07-34N 094-08E. Wide berth from area advised. 2. Cancel this MSG 210630 UTC Mar 24.
<b>301. India West Coast - off Dabhol.</b> Charts IN 21 256 293 INT 7022. Firing by CG scheduled from 221230 to 221430 UTC Mar 24 in danger area bounded within 17-32N to 17-50N and 072-00E to 072-20E. Wide berth from area advised. 2. Cancel this MSG 221530 UTC Mar 24.
<b>302. India East Coast – Balasore.</b> Charts IN 31 351 INT 7419. Balasore NAVTEX (21-29N 086-55E) transmitter switched off from 200230 to 201230 UTC Mar 24. 2. Cancel this MSG 201230 UTC Mar 24.
<b>303. India West Coast - off Kollam.</b> Charts IN 22 7706 INT 752. Firing scheduled 22 and 23 Mar 24 from 0430 to 1130 UTC in danger area bounded within 08-30N to 08-45N and 075-15E to 075-30E. Wide berth from area advised. 2. Cancel this MSG 231230 UTC Mar 24.
<b>304. India East Coast – Sriharikota.</b> Charts IN 32 313 356 INT 7400. Rocket launch from 13-38.3N 080-14.2E scheduled on 22 Mar 24 from 0030 to 0430 UTC. Danger sector circle of 10 nm around launcher. Wide berth from area advised.

<b>304. Continued.</b>
2. Cancel this MSG 220530 UTC Mar 24.
<b>305. India West Coast.</b> Charts IN 21 253 255 292 INT 7334. Rig move. Trident-12 (18-45.23N 072-18.00E), Gd Chaaya (20-13.31N 071-54.79E). INTM 06/24, 056(T) refers. Wide berth requested.
<b>306. India West Coast - off Mumbai.</b> Charts IN 21 255 292 INT 7021. Dsv wilchief-1, freight 54, sea conquest, sea venture, albatross 37 progressing offshore support activities in vicinity of 19-31.85N 071-24.93E, 19-18.33N 071-22.77E. Wide berth requested.
2. Cancel this MSG 301830 UTC Apr 24.
<b>307. Southern Indian Ocean.</b> Charts IN 7070 7073 INT 73. Space debris predicted from 24 Mar to 02 Apr 24 between 2258 UTC and 0327 UTC in area bounded by 08-53S 092-28E, 07-46S 089-27E, 30-12S 061-09E, 40-45S 002-21W, 42-56S 002-24W, 32-16S 063-10E. Wide berth from area advised.
2. Cancel this MSG 020427 UTC Apr 24.
<b>308. Southern Indian Ocean.</b> Charts IN 7070 7073 INT 73. Space debris predicted from 21 Mar to 30 Mar 24 between 2321 UTC and 0622 UTC in area bounded by 08-53S 092-28E, 07-46S 089-27E, 30-12S 061-09E, 40-45S 002-21W, 42-56S 002-24W, 32-16S 063-10E. Wide berth from area advised.
2. Cancel this MSG 300722 UTC Mar 24.
<b>309. India West Coast - off Ponnani.</b> Charts IN 22 259 7706 INT 7356. Firing by CG aircraft scheduled 26 and 27 Mar 24 from 0430 to 1030 UTC in danger area bounded within 10-20N to 10-50N and 075-00E to 075-35E. Wide berth from area advised.
2. Cancel this MSG 271130 UTC Mar 24.
<b>310. India East Coast – Chennai.</b> Charts IN 33 313 356 3001 INT 7400. Firing scheduled from 260830 to 260930 UTC Mar 24 in danger sector extending upto 11 nm between bearing 045 and 075 from 13-07.02N 080-18.01E. Wide berth from area advised.
2. Cancel this MSG 261030 UTC Mar 24.
<b>311. India West Coast - off Hazira.</b> Charts IN 21 209 254 INT 7331. Coastal triumph progressing survey in area bounded by 21-11.54N 072-32.65E, 21-03.49N 072-32.65E, 21-03.49N 072-28.19E, 21-05.08N 072-28.19E, 21-05.08N 072-18.01E, 21-02.78N 072-18.01E, 21-02.78N 072-13.66E, 21-11.54N 072-13.66E. Wide berth of 02 nm requested.
2. Cancel this MSG 151830 UTC Apr 24.
<b>312. India East Coast – Sriharikota.</b> Charts IN 32 313 356 INT 7400. Rocket launch from 13-38.3N 080-14.2E scheduled from 25 Mar to 28 Mar 24 from 0030 to 0430 UTC. Danger zone is circle of 10 nm around launcher. Wide berth from area advised.
2. Cancel this MSG 280530 UTC Mar 24.
<b>313. India East Coast - off Visakhapatnam.</b> Charts IN 31 308 354 391 INT 7409. Experimental flight trials scheduled 26 to 27 Mar 24 from 0500 to 0900 UTC and 28 Mar 24 from 0430 to 1030 UTC in danger area bounded within 17-44.38N to 17-45.45N and 083-44.38E to 083-45.52E. Wide berth from area advised.
2. Cancel this MSG 281130 UTC Mar 24.
<b>314. India East Coast - off Balasore.</b> Charts IN 31 301 351 INT 7419. Experimental flight trials scheduled 26 to 28 Mar 24 from 0330 to 0730 UTC in danger area bounded by (a) 21-36.9N 087-30.07E (b) 21-02.72N 088-52.75E (c) 19-27.23N 087-32.52E (d) 20-09.6N 086-36.72E (e) 20-42.18N 087-08.98E (f) 20-57.35N 086-54.47E. Danger area extending up to coastline joining point a and f. Wide berth from area advised.
2. Cancel this MSG 280830 UTC Mar 24.
<b>315. NAVAREA VIII - Warnings in force as on 22 Mar 2024.</b>
<b>2022 Series</b> - 134 162 237 461 519
<b>2023 Series</b> - 116 161 178 240 386 455 456 484 574 604 622 655 675 703 733 741 748 750 929 1046 1057
<b>2024 Series</b> - 032 036 044 052 066 120 123 126 131 132 142 144 159 160 175 180 181 188 189 194 205 215 224 225 240 241 245 246 250 251 253 254 258 259 261 262 271 281 282 288 289 290 291 296 297 298 303 305 306 307 308 309 310 311 312 313 314
(a) NAVAREA VIII warnings less than 42 days promulgated via safetynet
(b) Text of NAVAREA VIII warning in force including those which no longer broadcast available in <a href="http://www.hydrobharat.gov.in">www.hydrobharat.gov.in</a> .
2. Cancel this MSG 291830 UTC Mar 24.
<b>316. India West Coast - off Mumbai.</b> Charts IN 21 255 292 INT 7021. Maram will carry out submarine cable repairs from 24 Mar to 17 Apr 24 in area bounded by 18-59.00N 072-37.16E, 18-58.84N 072-36.47E, 18-52.06N 072-24.15E, 18-52.23N 072-23.75E, 18-46.73N 072-09.51E, 18-43.96N 072-09.19E. Wide berth requested.
2. Cancel this MSG 171830 UTC Apr 24.
<b>317. India West Coast - off Mithaport.</b> Charts IN 21 201 251 INT 7318. IFB AL Huseni reported sunk in approximate position 23-28N 068-04E.
<b>318. Lakshadweep Sea - off Minicoy I.</b> Charts IN 22 273 2006 INT 752. Firing scheduled from 280130 to 281230 UTC Mar 24 in danger area bounded by 08-15.36N 073-04.50E, 08-14.89N 073-03.32E, 08-16.53N 073-03.30E, 08-16.57N 073-03.43E. Wide berth from area advised.

<b>318. Continued.</b>
2. Cancel this MSG 281330 UTC Mar 24.
<b>319. India East Coast - off Visakhapatnam.</b> Charts IN 31 354 391 7071 INT 7408. Experimental flight trials scheduled 29 to 30 Mar 24 from 0430 to 0630 UTC and 0830 to 1030 UTC in danger area bounded by 18-03.65N 083-44.35E, 17-42.08N 084-53.26E, 16-35.91N 083-59.81E, 16-51.80N 083-21.48E. Wide berth from area advised.
2. Cancel this MSG 301130 UTC Mar 24.
<b>320. Andaman Sea - off Great Nicobar I.</b> Charts IN 33 409 472 INT 7032. Hydrographic survey being progressed in area bounded within 06-51N to 06-55N and 093-36E to 093-40E. Wide berth requested.
2. Cancel this MSG 311830 UTC Mar 24.
<b>321. India West Coast.</b> Charts IN 21 255 292 INT 7334. Rig move. Admarine 11 (18-41.47N 072-20.88E), divine driller (19-21.84N 071-23.84E). INTM 06/24, 056(T) refers. Wide berth requested.
<b>322. Cancel NAVAREA VIII MSG 271/24, 307/24, 308/24, 312/24, 314/24 and this MSG.</b>
<b>323. Andaman Sea.</b> Charts IN 41 472 473 INT 757. Firing scheduled 29 and 30 Mar 24 from 0330 to 0500 UTC and 0930 to 1130 UTC in danger area bounded by 11-39.18N 092-59.30E, 10-47.43N 093-43.68E, 09-12N 094-11.25E, 08-22.76N 093-59.43E, 08-12.73N 093-22.38E, 08-57.68N 093-26.32E, 10-34.73N 092-56.76E, 11-30.76N 092-28.12E. Wide berth from area advised.
2. Cancel this MSG 301230 UTC Mar 24.
<b>324. India West Coast - off Kochi.</b> Charts IN 22 259 INT 7356. Firing scheduled 29 and 30 Mar 24 from 0430 to 1130 UTC in danger area bounded by 10-25N 075-30E, 10-30N 075-20E, 10-15N 075-20E, 10-15N 075-25E, 10-20N 075-30E. Wide berth from area advised.
2. Cancel this MSG 301230 UTC Mar 24.
<b>325. India West Coast - off Kolachel.</b> Charts IN 32 223 224 260 262 INT 754. TN12MFB428 progressing survey in areas bounded by (a) 08-03.2N 076-55.3E, 08-18.2N 077-05E, 08-07.5N 077-18.8E, 08-05N 077-33E, 08-10N 077-40E, 07-52N 077-44E, 07-51N 077-17E (b) 08-10.4N 077-44.1E, 08-12.3N 077-47E, 08-13.7N 077-47.1E, 08-15.4N 077-51.1E, 08-12.1N 077-52.7E, 08-07.7N 077-45.6E (c) 08-27N 078-05E, 08-29.7N 078-07.4E, 08-40N 078-08E, 08-44N 078-09.4E, 08-44N 078-12E, 08-27N 078-12E. Wide berth requested.
2. Cancel this MSG 151830 UTC May 24.
<b>326. Southern Indian Ocean.</b> Charts IN 7070 7073 INT 73. Space debris predicted from 30 Mar to 07 Apr 24 between 0058 UTC and 0427 UTC in area bounded by 08-53S 092-28E, 07-46S 089-27E, 30-12S 061-09E, 40-45S 002-21W, 42-56S 002-24W, 32-16S 063-10E. Wide berth from area advised.
2. Cancel this MSG 070527 UTC Apr 24.
<b>327. India West Coast - off Porbandar.</b> Charts IN 21 204 252 271 292 INT 7021. IAF firing from Kathiawar range scheduled 01 to 10 Apr 24 from 0200 to 1330 UTC in danger area bounded by 22-12N 068-36.33E, 21-15.5N 069-04E, 21-09N 069-40E, 21-15.5N 069-42.5E, 22-05.75N 068-49E. Wide berth from area advised.
2. Cancel this MSG 101430 UTC Apr 23.
<b>328. Bay Of Bengal - off Bangladesh.</b> Charts IN 31 BA 90 817 INT 756. Firing by Bangladesh Navy scheduled 01 to 30 Apr 24 from 0001 to 1600 UTC in danger areas bounded by (a) 21-20.83N 090-34E, 21-41N 091-14E, 21-20.83N 091-28E, 21-00N 090-47.83E (b) 20-07N 090-52E, 20-22N 091-06E, 20-00N 091-36E, 19-44N 091-21E (c) 20-22N 091-06E, 20-46.5N 091-31E, 20-24N 091-59E, 20-00N 091-36E (d) 21-18N 089-31E, 21-18N 089-50E, 21-04N 089-54E, 21-04N 089-34E (e) 20-58N 089-34E, 20-58N 089-54E, 20-34N 089-54E, 20-34N 089-34E. Wide berth from area advised.
2. Cancel this MSG 301700 UTC Apr 24.
<b>329. India West Coast - off Mumbai.</b> Charts IN 21 253 255 292 INT 7021. Samudra Sarvekshak progressing survey at various locations in area bounded by 21-10.25N 072-29.31E, 20-46.6N 071-30.05E, 19-52.2N 070-45.81E, 19-06.31N 070-44.98E, 18-33.6N 070-56.05E, 17-55.96N 071-58.26E, 17-56.18N 072-28.4E, 18-50.98N 071-55.73E, 19-53.11N 072-26.4E, 20-33.74N 072-50.4E. Wide berth requested.
2. Cancel this MSG 231830 UTC Apr 24.
<b>330. Bay Of Bengal - off Balasore.</b> Charts IN 31 301 351 3011 INT 7419. IAF exercise scheduled from 01 to 10 Apr 24 from 0400 to 0600 UTC and 0900 to 1100 UTC in danger area bounded by (a) 20-57N 086-54E (b) 21-41N 087-45E (c) 21-31N 087-42E (d) 21-13N 087-23E (e) 21-00.38N 087-02.85E. Danger area extending up to coastline joining point a and b. wide berth from area advised.
2. Cancel this MSG 101200 UTC Apr 24.
<b>331. NAVAREA VIII - Warnings in force as on 28 Mar 2024.</b>
<b>2022 Series</b> - 134 162 237 461 519
<b>2023 Series</b> - 116 161 178 240 386 455 456 484 574 604 622 655 675 703 733 741 748 750 929 1046 1057
<b>2024 Series</b> - 032 036 044 052 066 120 123 126 131 132 142 144 159 160 175 180 181 188 189 194 205 215 224 225 245 246 253 254 258 259 261 262 281 282 288 289 291 296 297 298 305 306 311 315 316 317 319 320 321 323 324 325 326 327 328 329 330
(a) NAVAREA VIII Warnings less than 42 days promulgated via safety net.
(b) Text of NAVAREA VIII Warning in force including those which no longer broadcast available in <a href="http://www.hydrobharat.gov.in">www.hydrobharat.gov.in</a> .

<p><b>331. Continued.</b> 2. Cancel this MSG 051830 UTC Apr 24.</p>
<p><b>332. Arabian Sea.</b> Charts IN 7071 7072 7073 INT 73. Fishing vessel Sheng Fan reported fire onboard in approximate position 04-24.27N 060-12.58E at 290315 UTC Mar 24. Crew rescued. Vessels transiting to keep well clear and maintain sharp lookout. 2. Cancel this MSG 010315 UTC Apr 24.</p>
<p><b>333. India West Coast - Kochi.</b> Charts IN 22 220 259 2004 INT 7356. Firing scheduled (a) 01, 08, 15, 22, 29 Apr 24 from 0900 to 1200 UTC and (b) 05, 12, 19, 26 Apr 24 from 0900 to 1200 UTC and 1230 to 1430 UTC in danger area bounded by 09-57.5N 075-59.5E, 09-57.7N 076-14.2E, 09-44N 076-17.5E, 09-42.5N 076-09.5E. Wide berth from area advised. 2. Cancel this MSG 291300 UTC Apr 24.</p>
<p><b>334. India West Coast – off Kochi.</b> Charts IN 22 220 259 2004 INT 7356. Subsurface firing scheduled from 010930 to 011330 UTC Apr 24 in danger area bounded by 09-58N 075-16E, 10-24N 075-24E, 10-08N 075-30E, 10-16N 075-06E. Wide berth from area advised. 2. Cancel this MSG 011430 UTC Apr 24.</p>





**SECTION – VI**  
**CORRECTIONS TO SAILING DIRECTIONS (PILOTS)**

NIL

7.1

**SECTION – VII**  
**CORRECTIONS TO LIST OF LIGHTS**

NIL

8.1

**SECTION – VIII**  
**CORRECTION TO LIST OF RADIO SIGNALS**

**INP 31(1), 2019**

*(Last correction: Edition No. 06 dated 16 Mar 2024)*

NIL

**INP 31(2), 2019**

*(Last correction: Edition No. 06 dated 16 Mar 2024)*

NIL

**INP 31(5), 2021**

*(Last correction: Edition No. 03 dated 01 Feb 2024)*

NIL

**INP 31(6), 2023**

*(Last correction: Edition No. 06 dated 16 Mar 2024)*

NIL

## SECTION – IX

### REPORTING OF NAVIGATIONAL DANGERS

#### Appeal to all Mariners

1. Mariners at sea whilst on passage, or whilst entering / leaving ports / Harbour and other waterways, are requested to look out for new or suspected dangers to navigation, changes in aids to navigation, or corrections to published charts and Sailing Directions. Whenever any such changes / dangers are observed, mariners are requested to notify the same to the Chief Hydrographer to the Government of India at the following address: -

National Hydrographic Office  
107-A, Rajpur Road,  
Dehradun - 248001  
(Uttarakhand), India

e-mail : [msis-inho@navy.gov.in](mailto:msis-inho@navy.gov.in), [inho@navy.gov.in](mailto:inho@navy.gov.in)  
Fax No. : +91-135- 2748373  
Web : [www.hydrobharat.gov.in](http://www.hydrobharat.gov.in)

#### Instructions for filling up IH 102

2. Kindly follow the instructions below in order to help the Hydrographic Office (the recipient) to quickly issue NAVAREA warning / Notice to Mariners for the benefit of all other mariners at sea.

#### Position Reporting

3. Accurate position or knowledge of position error is of great importance. Latitude and Longitude should only be used to specify position details when they have been fixed by GPS or Astronomical Observations. A full description of the method, equipment, time and datum (WGS 84/Everest/Other) used should be given. When position is defined by sextant angles or bearings (true or magnetic to be specified), more than two bearings should be used in order to provide a redundancy check. Distances observed by Radar should be corrected for index errors. Where position is derived after the event, from other observations and/or Dead Reckoning, the methodology of deriving the position should be included.

4. Paper Charts. A copy/tracing of largest scale chart is the best medium for forwarding details, the alterations and additions being shown thereon in red, but adequate details from the chart must be traced in black ink to enable the amendments to be fitted correctly.

5. ENCs. A Screen shot of largest scale usage band ENC with the alterations and additions being shown thereon in red. If it is to report an issue with the display of an ENC, a screen shot of the affected cell should be sent along with details of the ECDIS make and version in use at the time.

#### Depth Reporting

6. When soundings are obtained using echo sounders, the echo sounding trace should be duly annotated with date, times, position, depths, etc., and forwarded with the IH102. It is important to state whether the echo sounder is set to register depths below the surface or below the keel; in the latter case the vessel's draught should be given. Time and date should be given in order that corrections for the height of the tide may be made where necessary. The make, name and type of echo sounder should also be given.

7. For modern echo sounders that use electronic 'range gating', care should be taken that the correct range scale and appropriate gate width are in use. Older electro-mechanical echo sounders frequently record signals from echoes received back after one or more rotations of the stylus have been completed. Thus with a set whose maximum range is 500m, an echo recorded at 50m may be from depths of 50m, 550m or even 1050m. Soundings recorded beyond the set's nominal range can usually be recognised by the following:

- (a) The trace being weaker than normal for the depth recorded;
- (b) The trace passing through the transmission line;
- (c) The feathery nature of the trace.

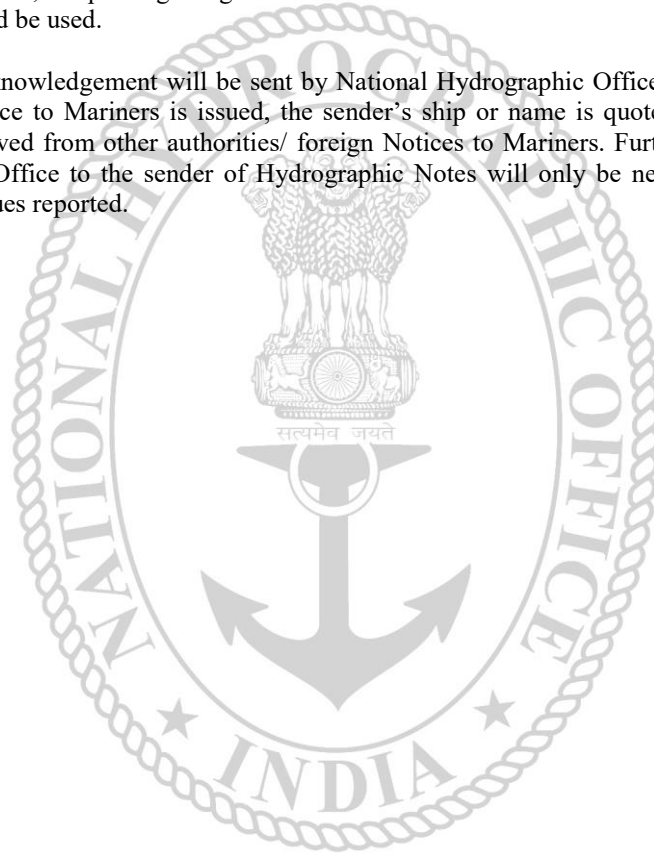
As a check that apparently shoal soundings are not due to echoes received beyond the set's nominal range, soundings should be continued until reasonable agreement with charted soundings is reached. However, soundings received after one or more rotations of the stylus can still be useful and should be submitted if they show significant differences from the charted depths. Efforts should be made to identify and negate false echoes if any. The Mariners Handbook (NP100) and Notice 15 Special Edition of Notice to Mariners may be consulted.

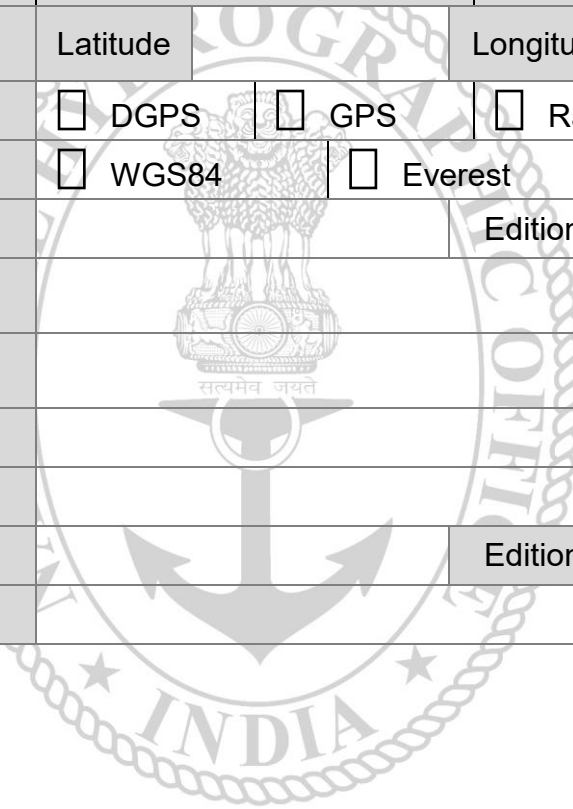
8. Reports which cannot be confirmed or are lacking in certain details should not be withheld. Shortcomings should be stressed and any firm expectation of being able to check the information on a succeeding voyage should be notified.

9. Reports of **shoal soundings**, uncharted dangers and aids to navigation out of order should, at the mariner's discretion, also be made by radio to the nearest coast radio station. The draught of modern tankers in such that any uncharted depth under 30 meters or 15 fathoms may be of sufficient importance to justify a radio message.

10. Changes to Port information should be forwarded on Form IH.102A together with form IH.102. Form 102A contains the information required for Sailing Directions and should be used as an *aide memoir*. The Mariners Handbook, NP100, Chapter 8 gives general instructions. Where there is insufficient space on the forms an additional sheet should be used.

***Please Note:*** - An acknowledgement will be sent by National Hydrographic Office for Hydrographic Notes, on receipt. When a Notice to Mariners is issued, the sender's ship or name is quoted as authority unless the information is also received from other authorities/ foreign Notices to Mariners. Further, communication from National Hydrographic Office to the sender of Hydrographic Notes will only be necessary to verify unusual features or abnormal values reported.



<b>HYDROGRAPHIC NOTE</b>				<b>IH.102 (Revised 2012)</b>	
For Forwarding information for Indian Charts, ENC's and Publications and reporting of ENC related issues					
Date		Ref. Number			
Name of the Ship or Sender					
Address					
Tel/FAX/E-mail address					
Observation Date		Time (UTC/IST)			
Object of Changes Observed (Tick appropriate)	<input type="checkbox"/> Bathymetry	<input type="checkbox"/> Nav. Dangers	<input type="checkbox"/> Nav. aids		
	<input type="checkbox"/> Designated Areas	<input type="checkbox"/> Others			
Geographical Position (See Instructions Overleaf)	Latitude		Longitude		
Position Method	<input type="checkbox"/> DGPS	<input type="checkbox"/> GPS	<input type="checkbox"/> Radar	<input type="checkbox"/> Others	
Datum Used	<input type="checkbox"/> WGS84	<input type="checkbox"/> Everest	<input type="checkbox"/> Others		
Charts Affected		Edition			
Latest Edition of Indian Notices to Mariners Held					
Tracing/Plot/Photograph if enclosed					
ENCs Affected					
Latest Update Disk Held					
Publication Affected		Edition			
Page No./Light No. etc					
Details:					
					
Limitations if any in Reporting the Changes Above					
Details of Documents/Photos attached:					
Signature of the Master/Reporter/Observer					

<b>HYDROGRAPHIC NOTE FOR PORT INFORMATION</b> (To accompany Form IH.102)		<b>IH.102A</b> (Revised 2012)	
Date		Ref. No.	
Name of the Ship or Sender			
Address			
Tel/Fax/E-mail			
<b>1. NAME OF PORT</b>			
Location	Latitude		Longitude
<b>2. GENERAL REMARKS</b>			
Principal activities and trade			
Number of ships and tonnage handled per year			
Maximum size of draught of vessel handled			
Copy of Port handbook (if available)			
<b>3. ANCHORAGES</b>			
Type / Purpose			
Minimum depth at anchorage			
Shelter afforded			
Holding ground			
Recommended pilotage to the anchorage			
<b>4. PILOTAGE</b>			
Authority for request			
Embarkation position			
Regulations			
Documents to be provided			
Recommended pilotage to approach of Harbour and Berths			
Information on VTMS			
<b>5. DIRECTIONS</b>			
Entry and Berthing Information			
Tides (Height)			
Tidal Stream Information			
Wind Speed and Direction			
Navigational Aids (Beacons / Buoys / Lights / Etc.)			
<b>6. POLLUTION CONTROL</b>			
Local regulation in force (If Any)			
<b>7. TUGS</b>			
Number available / Tug type			
Maximum HP / Bollard pull			

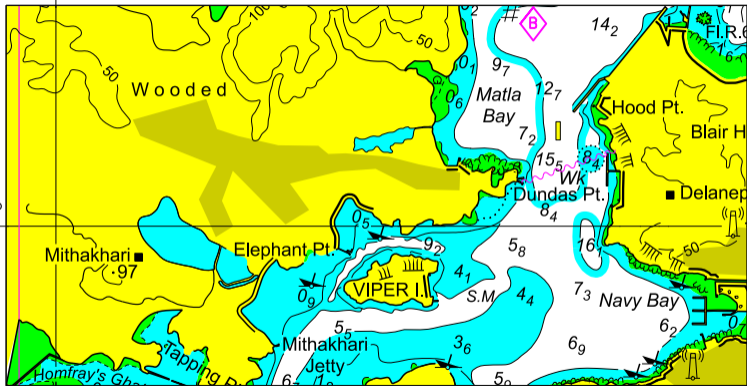
<b>7. TUGS (Continued)</b>	
Requesting authority	
Availability timing / Communication	
Hiring charges	
<b>8. BERTHING AND WHARVES</b>	
Type & Number of berths available	
Length	
Depth alongside	
Facilities available	
Procedure for requesting berth & hiring charges	
<b>9. CARGO HANDLING</b>	
Containers	
Lighters & Ro-Ro etc.	
<b>10. CRANES</b>	
Brief details of Max. lifting capacity, Height of boom at wharf level and Outreach	
Container handling facilities	
<b>11. BRIDGES</b>	
Vertical clearance	
<b>12. REPAIRS</b>	
Hull machinery and underwater	
Ship and Boat yards	
Docking or Slipway facilities (Size/ Dimensions of vessels handled)	
Hards and Ramps	
Divers / Diving assistance	
<b>13. SERVICES</b>	
Radio / FAX / Telephone / Internet etc.	
Medical	
Quarantine	
Consul	
Ship chandlery and Stevedores	
Compass adjustment	
Tank cleaning	
Hull painting	
Police / Ambulance / Firefighting (Fixed and Mobile facilities)	
Nav. Warning and Weather bulletin	
Garbage disposal / Waste oil disposal	
Helicopter landing facilities	



<b>14. RESCUE &amp; DISTRESS</b>	
Salvage, Lifeboat, Life guards, etc	
<b>15. SUPPLIES</b>	
Fuel (Type, Quantities & Method of delivery)	
Fresh water (Method of delivery and Rate of supply)	
Provisions	
Chart agents	
<b>16. COMMUNICATIONS</b>	
Road, Rail and Air services available	
Nearest airport or airfield	
Port Radio and Information Service (Frequencies and Operating Hours)	
<b>17. PORT AUTHORITY</b>	
Designation, Address, Telephone, E-mail Address and Website	
<b>18. SECURITY</b>	
Security of ports / International Ship and Port Facility Security (ISPS) compliance	
Custom and Immigration Regulations in force	
<b>19. SMALL CRAFT FACILITIES</b>	
Information and facilities for small craft, yachts visiting the port	
Yacht clubs, berths etc	
<b>20. SHORT LEAVE</b>	
<b>21. CLUBS RECREATION</b>	
Information Kiosk (Location)	
Foreign Exchange firms / Banks (Within / Near Port Area)	
Places of interest near port	
<b>22. VIEWS</b>	
Photographs(Duly annotated) of the approaches, leading marks, the entrance to the harbour etc.	
<b>23. ADDITIONAL DETAILS</b>	
Any other information considered to be useful for the mariners	
<b>SIGNATURE OF THE OBSERVER / REPORTER / MASTER</b>	

92°40'E

To accompany Indian to Mariners No. 058/24

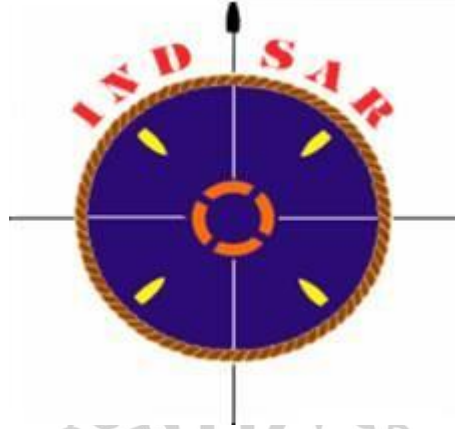


11°40'

11°40'

92°40'E

Block Correction for Chart No. 4253



**FOR 24 X 7 SAR ASSISTANCE IN INDIAN SRR**

**Email: [mrcc-west@indiancoastguard.nic.in](mailto:mrcc-west@indiancoastguard.nic.in)**

**NATION WIDE SAR TELE: 1554 (LAND LINE)**

**INMARSAT C (IOR) 441907210 CODE: 43 (TOLL FREE)**

**AFTN: VABBYXYC**